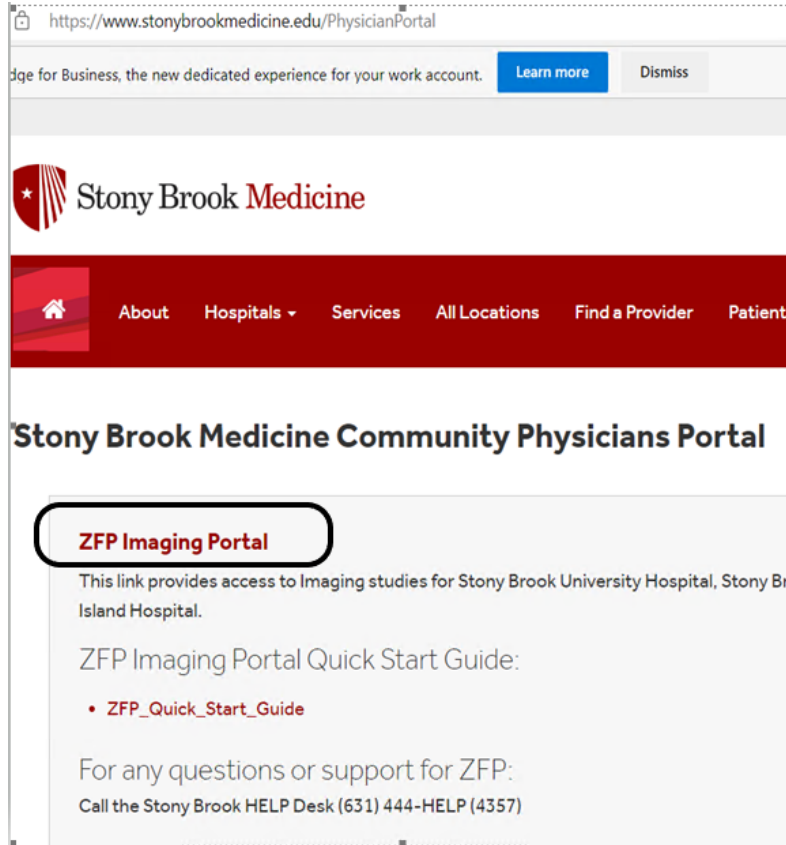
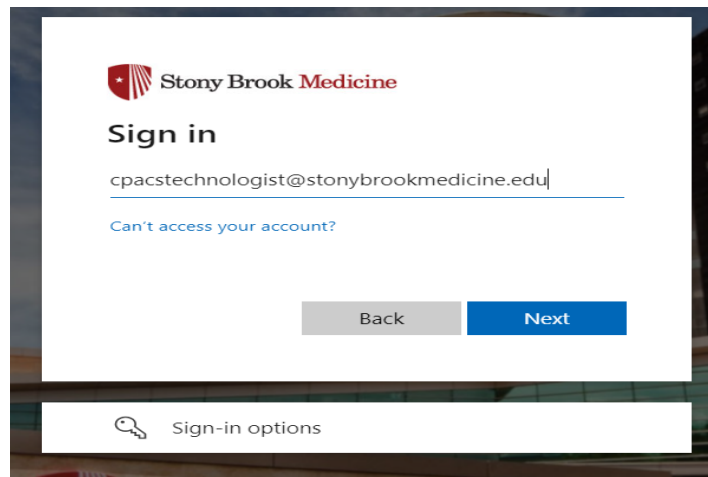


Physician Access to Community ZFP PACS

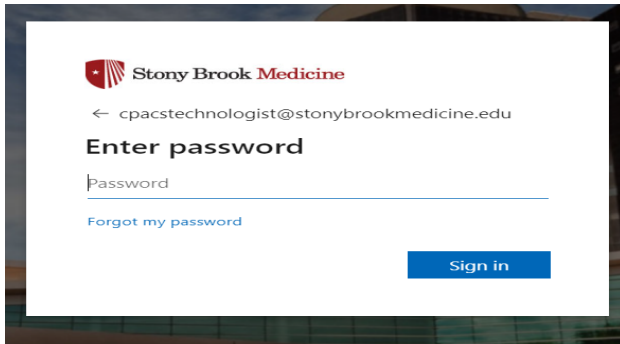
1. Go to <https://www.stonybrookmedicine.edu/PhysicianPortal>.
2. Select **ZFP Imaging Portal**.



3. This will bring you to a Multifactor authentication screen. Enter your email address and click next (if you don't have an SBM email, simply add your UHMC username (username@stonybrookmedicine.edu ex. jdoe@stonybrookmedicine.edu)).
- 4.



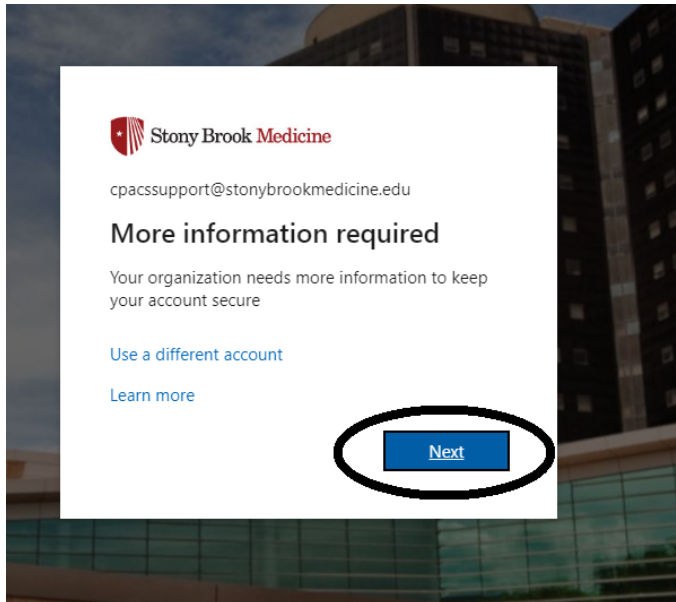
5. Enter UHMC password provided to grant access to the PACS portal. Then **Sign in**.

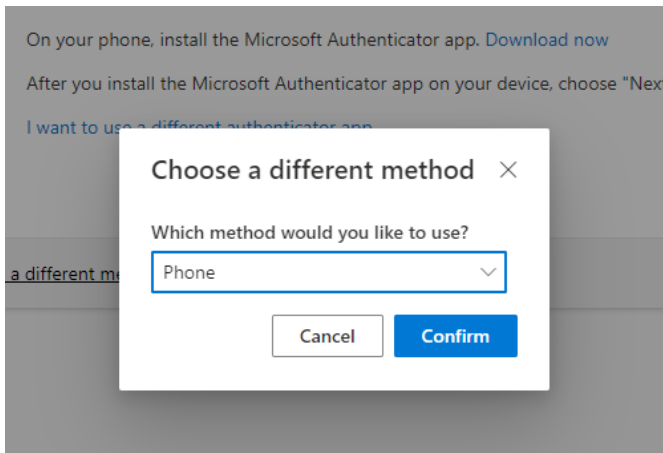
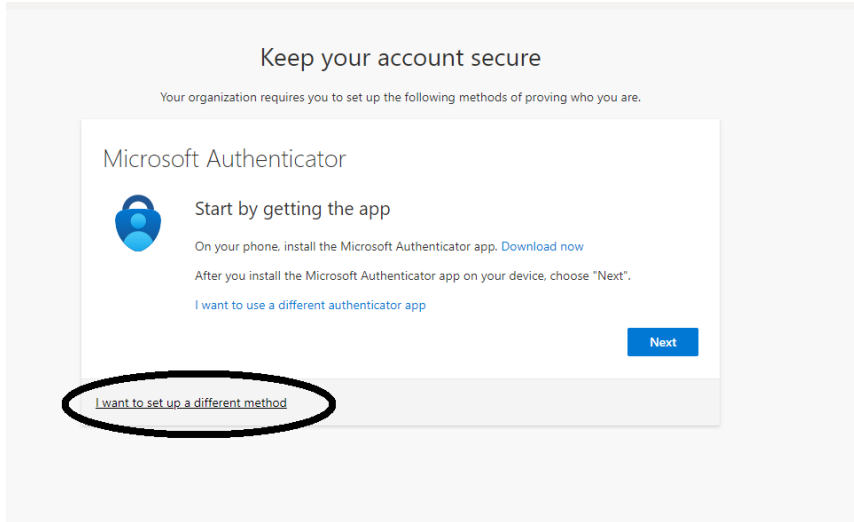


If you need to reset your password you can use the link on this screen. New passwords must meet the following requirements:

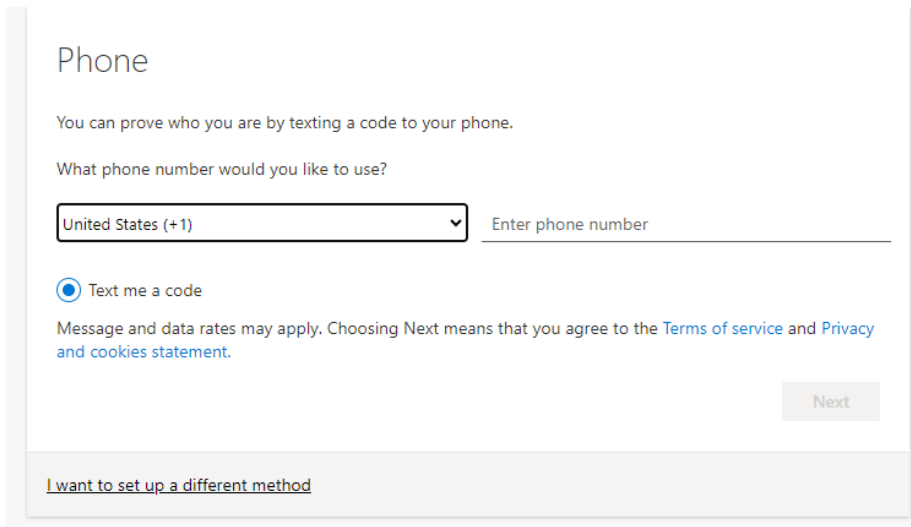
- Must be at least 8 characters in length
- Must have UPPER case letters
- Must have lower case letters
- Must have a number & a special character (1, 2, 3, 4, \$, @, !, *, %)
- You cannot reuse any of your last three passwords.

6. To keep your account secure you are required to verify your identity. On the Microsoft Authenticator screen choose **I want to set up a different method**. Choose **Phone**.





7. Enter cell phone number and select **Text me a code**.



8. Enter the 6-digit code that was sent to your cell phone. **Next.**

Your organization requires you to set up the following methods of proving who you are.

Phone

We just sent a 6 digit code to +1 631-██████. Enter the code below.

[Resend code](#)

[I want to set up a different method](#)

9. SMS verified message. **Next.**

Keep your account secure

Your organization requires you to set up the following methods of proving who you are.

Phone

✔ SMS verified. Your phone was registered successfully.


Keep your account secure

Your organization requires you to set up the following methods of proving who you are.

Success!

Great job! You have successfully set up your security info. Choose "Done" to continue signing in.

Default sign-in method:

 Phone
+1 631-██████

10. The imaging portal will open and you now will have access to images and reports.